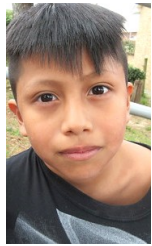




Whirlwind Missions

Outreach Update

June 2017



Hello, my friends!

Ashley, Penelope and I have been to a LOT of mission conferences. This weekend was a special one!

First Baptist Church of Doraville holds many fond memories for me. Over 30 years ago, Kathy and I got married there. It was an exceptional day of snow and sunshine! I can remember her walking down the aisle greeting people as she went by. Fun!

Yesterday, I looked down the same aisle she came down. When we got married, Doraville was a VERY different place. The GM plant was running full blast and the church was filled with white people.

Wow, has it changed! The Buford Highway corridor is now home to 145 different countries and 761 language groups! The world has come to us. I love different languages and cultures and it is a PERFECT spot for our ministry to thrive.

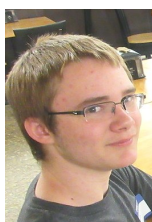
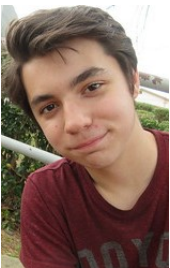
As I looked around the congregation, I saw some older white people, a LOT of young Latinos and a good group Koreans. I greeted the congregation in Korean, Spanish and good ol' Southern English: "Howdy!"

It's important to see how our country is changing. Three years ago, Anglo-Saxons became the largest *minority*. Less than half the people in the USA are white. That statistic will continue to change as our country becomes more ethnic. Our nation was FOUNDED on immigration! The two fastest growing groups are people living in multi housing and our immigrant population.

Whirlwind Missions is dedicated to reaching those two groups. In the last several years, I've been saddened to see our churches lose focus on the unreached people groups living around us. We have had to shut down long running missions, because of lack of volunteers. At the same time, we have seen growth in the teams coming to work with us during the year. It has been exciting to hear from youth directors across the USA who share stories of their kids starting new work in their own communities!

Your financial support is SO important to us. We have had some serious financial challenges recently. Insurance continues to be THE big ticket item. And you have to have it! Ashley will have her new daughter in September! Every dollar you give keeps your missionaries on the field! Please consider giving just a little extra to help us get through these lean times. THANKS!

LOVE, TIM AND KATHY



Take the Church, To the People!



PRAY FOR OUR SUMMER TEAMS!



Keep the Drive ALIVE!

***Please support our ministry! Make checks out to
WHIRLWIND MISSIONS.***

Mail checks to 5935 New Peachtree, Doraville, GA 30340